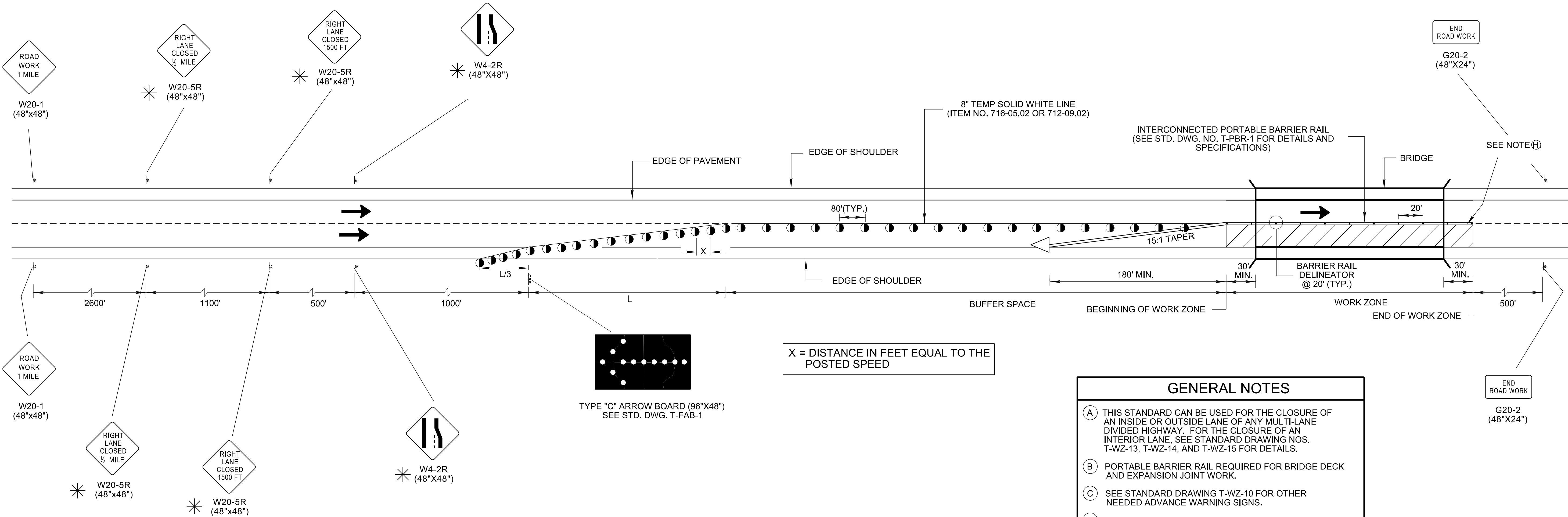


TRAFFIC CONTROL FOR ONE LANE (RIGHT OR LEFT) CLOSURE FOR BRIDGES ON DIVIDED HIGHWAYS



- REV. 10-06-06: CHANGED ITEM NO. FOR BARRIER RAIL DELINEATOR. ADDED GENERAL NOTE (L) CHANGED GENERAL NOTE (E)
- REV. 03-13-09: CHANGED GENERAL NOTE (E) AND ATTENUATOR LEGEND DESCRIPTION.
- REV. 03-05-17: ADDED ITEM NO. 716-05.02 OR 712-09.02.
- REV. 4-15-99: ADDED GENERAL NOTE (F)
- REV. 12-18-99: MODIFIED GENERAL NOTE (E)
- REV. 7-29-03: CHANGED GENERAL NOTE (E)
- REV. 4-15-04: CHANGED W4-2 SIGN. CHANGED GENERAL NOTE (D) TO COMPLY WITH 2003 MUTCD.
- REV. 9-1-05: REMOVED TYPE "C" WARNING LIGHTS FROM FLEXIBLE DRUMS IN TAPER.
- REV. 5-12-06: REPLACED VERTICAL PANEL WITH BARRIER RAIL DELINEATORS. ADDED GENERAL NOTES (G) & (H)

MINOR REVISION -- FHWA APPROVAL NOT REQUIRED.